

# SOPIX

*With*

**Ace**  
technology



## *Cutting-edge Technology*

SOPIX X-ray systems integrate the best of modern technology (Fiber-optic based CMOS)

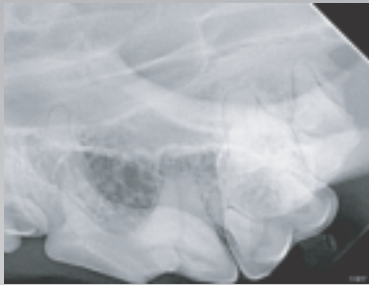


- Direct USB
- CMOS Based
- Size 1 and Size 2
- Rounded Corners
- Patented (ACE) Technology

*The perfect shot everytime...*

# SOPIX

With **Ace**  
technology



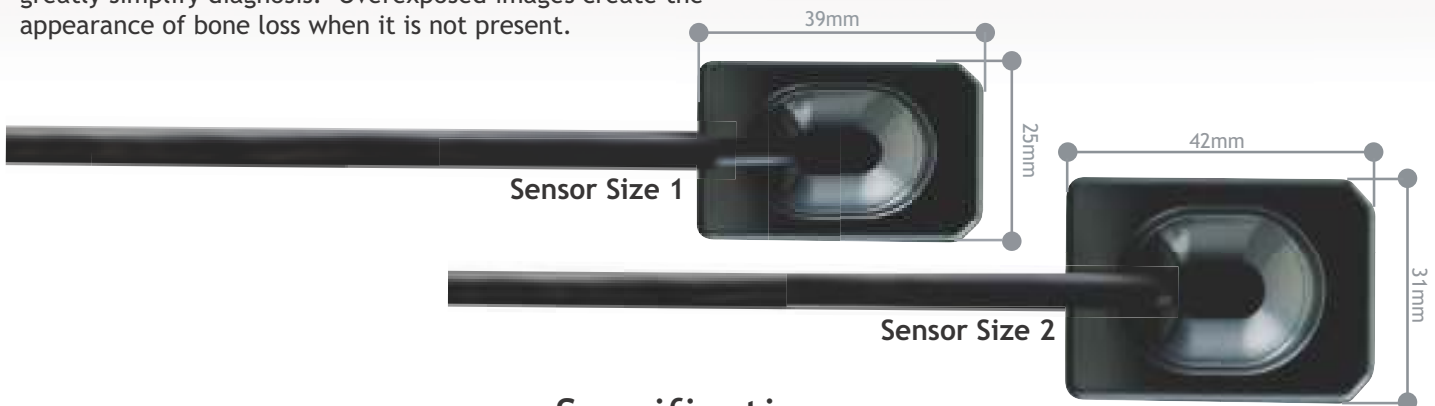
SOPIX at 0.20 seconds



Competitor sensor at 0.20 seconds

## Exceptional image quality

High-definition images and striking contrast can be achieved to greatly simplify diagnosis. Overexposed images create the appearance of bone loss when it is not present.



## Specifications

**Controller:**  
 Technology .....CMOS + CHEW scintillator + optic fiber  
 Theoretical resolution .....25 lp/mm  
 Pixel size .....20um x 20 um  
 Connection .....USB 2.0  
 Cable length for the USB cable .....3.70m / 12.1'  
 (up to 8.70 m / 28.5' ..... with booster supplied)  
 Imaging software provided .....Sopro Imaging

**Size 1:**  
 External dimensions .....25 x 39 mm / .98" x 1.53"  
 Active surface area .....600 mm<sup>2</sup> (20 x 30 mm)  
 Number of pixels .....1.50 million

**Size 2:**  
 External dimensions .....31 x 42 mm / 1.22" x 1.65"  
 Active surface area .....884 mm<sup>2</sup> (26 x 34 mm)  
 Number of pixels .....2.21 million

**Minimum Configuration Required:**

Operating system .....Windows XP Pro SP2  
 Processor .....Intel® Pentium IV - 1.3 GHz  
 RAM .....512 MB  
 Hard disk .....80 GB  
 USB ports .....2 USB2 Hi-Speed ports  
 Graphic card .....32 MB RAM  
 USB Chip set .....Intel® or NEC  
 Screen resolution .....1024 x 768

**Configuration Recommended:**

Operating system .....Windows XP Pro SP2, VISTA SP1, Windows 7  
 Processor .....Intel® Core 2  
 RAM .....2 GB  
 Hard disk .....320 GB  
 USB ports .....4 USB2 Hi-Speed ports  
 Graphic card with chip set .....Nvidia or ATI256 MB video not shared  
 USB Chip set .....Intel® or NEC  
 Screen resolution .....1024 x 768 or more