

ScanX Quantum™

Acquire | Store | View | Share

Imaging With No Limitations



One Machine Accommodates Dental and Full Body Imaging

The ScanX Quantum™ Computed Radiography System with In-Line Erase, is the premier imaging product from ALLPRO Imaging. Each ALLPRO Imaging system has been designed and manufactured in the U.S.A with state-of-the-art technology to produce the lightest, most portable, rugged and dependable digital imaging system available.

Designed and built exclusively for the demanding conditions encountered in portable radiography applications, the ScanX Quantum is extremely easy to deploy producing excellent quality digital images in seconds. The ScanX Quantum uniquely scans full body and all dental images seamlessly with one device. This efficiency coupled with repeatable consistent image quality provides results that allows the user to make critical decisions on the spot eliminating the need to return for retakes.

To complement your ScanX Quantum, you need imaging software to acquire, store, view and share images. TigerView, a Televere Systems product, will significantly improve your work flow for better patient management and diagnosis with superior image quality. Quickly and easily access all digital image files and share them with colleagues and patients. Window leveling and viewer enhancement tools allow for complete control of image display.



High-resolution images in seconds for critical decisions on-the-spot



Wire-free for tight access applications



Lightweight, extruded aluminum frame is exceptionally strong



Sturdy isolating / damping feet
Eliminate potential image quality issues due to external vibration



Patented, built-in eraser with manual or auto erase function.



Uses all brands of phosphor storage plates for dental and full body imaging with a black background



Dental and Full Body digital x-ray in one unit
Interchangeable plate guides allow scanning of 8"x10", 10"x12", 14"x17", and dental size phosphor plates (0-4) quickly and efficiently



Size 6 and 4 plates allow for shooting films in the OR on extremities

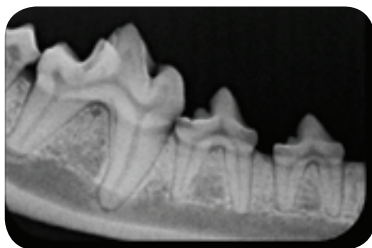
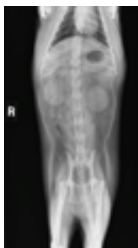
ScanX Quantum™

Imaging With No Limitations



SPECIFICATIONS

Part Number	D5000-FV
Dimensions	15.5 W x 18.0 L x 14.0 H (39.37cm x 45.72cm x 35.56cm)
Weight	43 lbs (19.5 Kg)
Resolution (LP/mm)	Vertical: 3.8 to 5.0 Horizontal: 3.8 to 7.0
Electrical Requirements	50/60Hz, 110-240VAC
Laser Classification	Class 1 Laser Product Compliance with FDA HHS 21 CFR 1040.10 and IEC 60825-1
Imaging Media	Phosphor Storage Plates in all standard sizes through 14" x 17" and all dental plates through Size 4
Supply Voltage	100 to 240VAC, 50/60Hz
Supply Current	2.5 A Maximum
Line Cord	North American style 10 foot long Hospital, Grade power cord, P/N 61035, Country specific line cords are available
Unit in Operation	Temperature: 20 to 115°F (-7 to 46°C) Humidity: 5% to 95% (Non-condensing) Heat Emission: <90W
Storage and Transport	Temperature: -21 to 130°F (-29 to 55°C) Humidity: 5% - 95% (Non-condensing)
Software	TigerView
Optional	Compact for space-confined areas; wall mount options are also available for greater space savings. Carrying options include a soft or hard case



<https://www.raytechdiagnostics.com/>
sales@raytechdiagnostics.com
613-799-4171